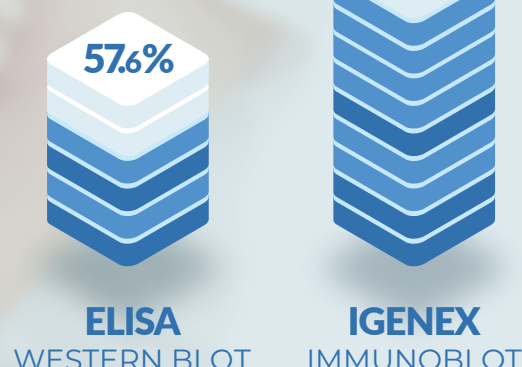




# UNPARALLELED LYME DISEASE TESTING

Lyme disease is one of the fastest growing infectious diseases in the United States. IGeneX has developed several industry-leading tests that measure antibody response to *B. burgdorferi*, the causative agent of Lyme Disease. For example, our ImmunoBlot test (see right) has a sensitivity rate that is nearly double that of the standard two-tier testing protocol. When used in conjunction with clinical symptoms and patient history, the tests can better assist physicians in accurately diagnosing patients.

The **IMMUNOBLOT** test for Lyme disease has a sensitivity greater **than 93%**, whereas the **ELISA** and Western Blot two-tier testing protocol recommended by the CDC has a sensitivity of only **57.6%**.



Source: Plos One 11(12): e0168613

## IGENEX WESTERN BLOT

**PROTOCOL:** Western Blotting refers to the electrophoretic transfer of proteins from sodium gels to a nitrocellulose membrane, followed by immunodetection of proteins using antibodies with fluorescent or chemiluminescent detection.

- Very specific, which means that most of the time it will be positive only if a person has been truly infected.
- A relatively inexpensive method to determine relative amounts and relative size of proteins

**PRICE: \$125**

TEST NUMBER: 188, 189

CPT CODE: 86617

## MOST POPULAR!

## IGENEX IMMUNO BLOT

**PROTOCOL:** Recombinant *B. burgdorferi* species antigens are sprayed at specific positions onto a nitrocellulose membrane and cut into strips. These strips are used to detect *B. burgdorferi* specific antibodies in patient serum.

- Easier to interpret than a Western Blot
- Improved specificity because pure proteins are sprayed at specific positions on the blot. Epitope testing for band 31 is not required.
- Improved sensitivity because it includes eight *B. burgdorferi* specific antigens from multiple strains and species of *B. burgdorferi*

**PRICE: \$225**

TEST NUMBER: 325, 335

CPT CODE: 86617

## IGENEX IGXSPOT

**PROTOCOL:** The IgXSpot is used for detecting and monitoring cellular immune responses to specific antigens. The assay allows visualization of the secretory product(s) of individual activated or responding cells to *Borrelia*-specific antigens. Each spot that develops in the assay represents a single reactive cell.

- Detects specific T-cell responses soon after infection when antibodies to the organisms are not detectable or late in the disease when the levels of antibodies are very low
- Especially useful for seronegative patients (those that do not produce antibodies)
- Allows patients to start treatment earlier. Especially patients with no EM rash, or young people who are at greater risk if symptoms appear.

**PRICE: \$295**

TEST NUMBER: 300

CPT CODE: 86352

WWW.IGENEX.COM

CONTACT IGENEX TODAY TO LEARN MORE ABOUT TESTING FOR LYME DISEASE.  
556 Gibraltar Rd. Milpitas, CA 95035 - [igenex.com](http://igenex.com) - 1-800-832-3200