

THE IMMUNOBLOT

The most advanced antibody test for
Lyme disease, Tick-Borne Relapsing Fever (TBRF),
Bartonellosis, and COVID-19.

Without accurate, multi-species tests that detect infection at all stages of disease, patients are unable to get a correct diagnosis and can't get better. IGeneX solves this problem with the ImmunoBlot.

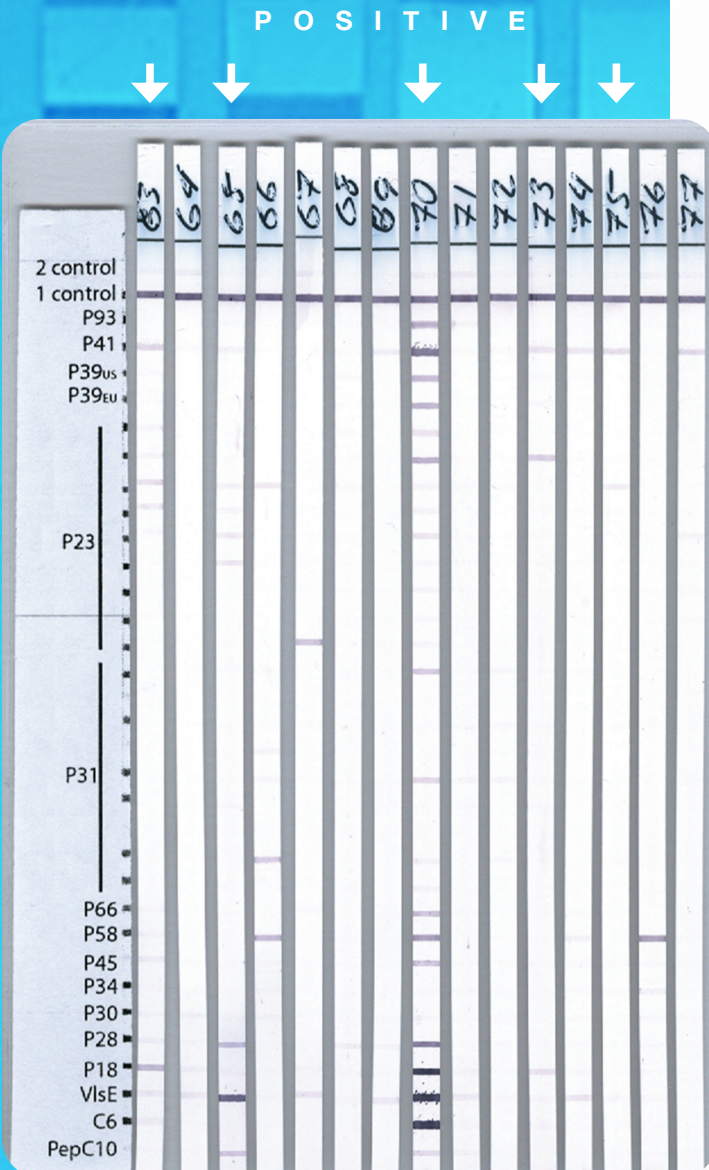
The ImmunoBlot uses multiple pure, recombinant proteins sprayed at specific positions on a blot. This ensures high sensitivity and specificity, and effectively replaces traditional tests such as ELISA and the western blot.



TBRF ImmunoBlot

Lyme Disease ImmunoBlot

The Lyme disease ImmunoBlot increases specificity without sacrificing sensitivity by using recombinant proteins from multiple species and strains of *Lyme borreliae*. By testing for more species than the traditional ELISA and western blot tests, the Lyme ImmunoBlot reduces the risks of false negatives. The ImmunoBlot includes all *Borrelia*-specific antigens relevant in North America and Europe, not just *B. burgdorferi* B31 or 297.



A sample is considered positive for *Lyme borreliae* antibodies if two or more of the following bands are present: 23 kDa, 31 kDa, 34 kDa, 39 kDa, 41 kDa and 93 kDa. Patient numbers 63, 65, 70, 73, and 75 are considered positive using IGeneX criteria.

Borreliosis is caused by two groups of *Borrelia*: *B. burgdorferi* group, which is transmitted by hard ticks, and the Tick-Borne Relapsing Fever (TBRF) *Borrelia* group, which can be transmitted by hard or soft ticks. Each group causes similar symptoms, such as fatigue, nausea, and joint pain, making them difficult to identify without testing. The TBRF ImmunoBlot detects antibodies to species from North America, European and Australian strains. The most common species are *B. miyamotoi*, *B. hermsii*, and *B. turicatae*. A sample is considered positive for TBRF *borreliae* antibodies if two or more TBRF *borrelia* specific bands are present.

Bartonella ImmunoBlot

The Bartonella ImmunoBlots are designed to detect IgM and IgG antibodies to Bartonella species including *B. henselae*, *B. quintana*, *B. elizabethae*, and *B. vinsonii*. Until recently, diagnostic tests for Bartonella, such as IFA, have been grossly insensitive and have not been able to detect many of the ever-growing list of species and strains. The new IGeneX ImmunoBlots overcome these obstacles with the ability to detect antibodies to multiple species of Bartonella.

COVID-19 ImmunoBlot

The COVID-19 ImmunoBlot detects both early (IgM) and late stage (IgG) antibodies against SARS-COV-2, the virus that causes COVID-19. Most tests only detect IgG antibodies. The ImmunoBlot also detects four antigen bands: 75 kDa, 58 kDa, 50 kDa and 25 kDa and is considered positive if two or more of the bands are present. Most COVID-19 tests, such as ELISA, detect only one antigen, making them less sensitive and often not specific enough to distinguish SARS-COV-2 from other viruses.

CONTACT IGENEX TODAY TO LEARN MORE
ABOUT TESTING WITH THE IMMUNOBLOT
556 Gibraltar Dr. Milpitas, CA 95035
igenex.com | 1-800-832-3200

