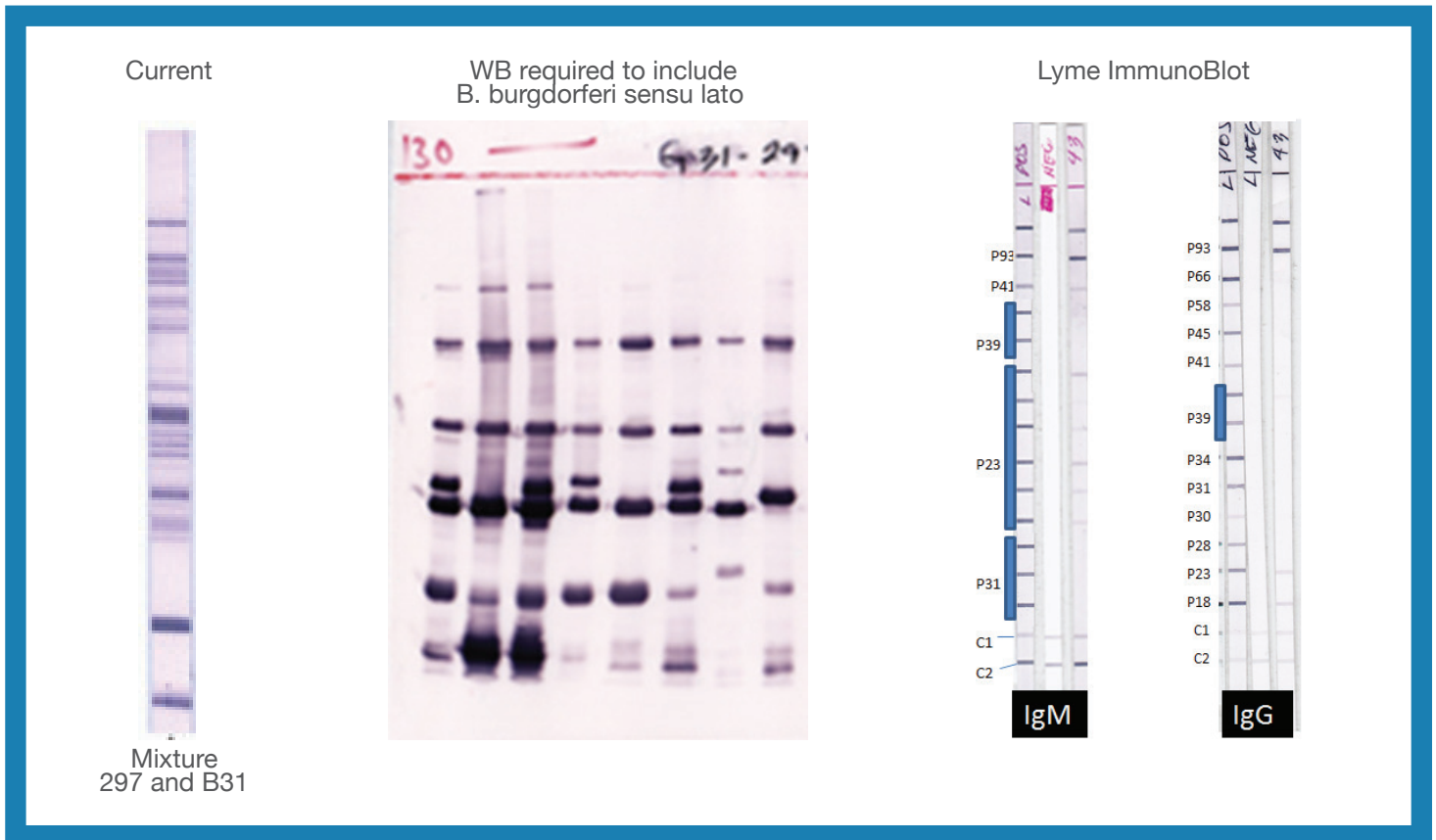


WHY IMMUNOBLOTS INSTEAD OF WESTERN BLOTS?



- 1** Reduced the *B. burgdorferi* group WB to a practical clinical assay strip.
- 2** In a WB, proteins are separated by size. Therefore more than one protein can be present at any one position (e.g. at 31kDA Osp A and non-specific antigen are present). Improved specificity because in an Immunoblot pure proteins are sprayed at specific positions on the blot.
- 3** No confirmation test such as 31 Epitope test required.
- 4** Improved sensitivity compared to the current Western blot, because the Immunoblot is designed to include *B. burgdorferi* specific antigens from several strains and species.