

THE MOST ADVANCED TEST TO DETECT  
ANTIBODIES TO BARTONELLA

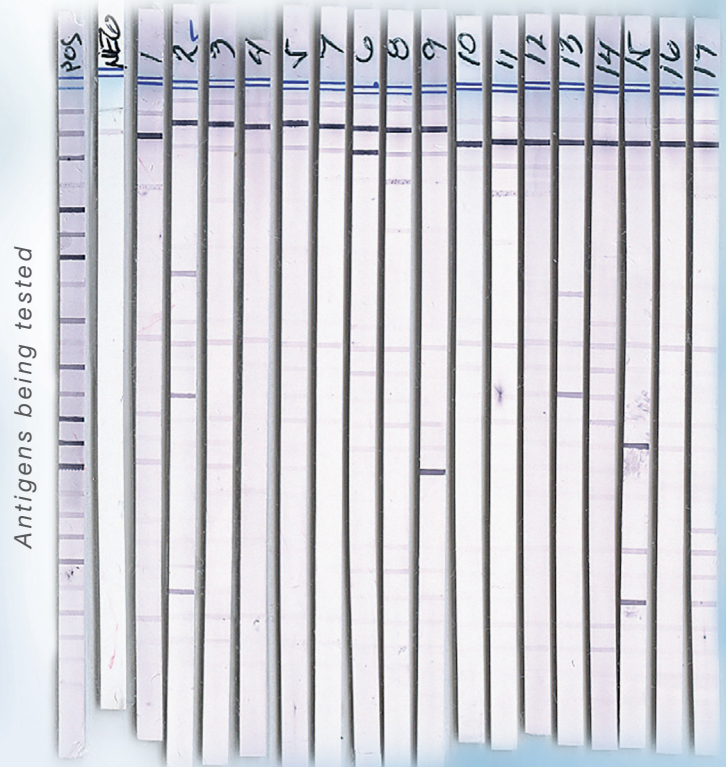
# BARTONELLA IMMUNOBLOT

*Bartonella* can cause serious diseases in your patients, such as Cat scratch disease (CSD), endocarditis, Trench fever, and Carrion's disease. The Bartonella ImmunoBlot tests for the *Bartonella* genus and multiple species of *Bartonella* that commonly infect humans, including *B. henselae*, *B. quintana*, *B. elizabethae* and *B. vinsonii*.

## Advantages of the Bartonella ImmunoBlot

The all-new Bartonella ImmunoBlot detects antibodies to multiple species of *Bartonella* in a single test without compromising specificity. The ImmunoBlot is a great complement to direct tests, such as PCR and FISH, which look for pathogens.

- ✓ Allows for identification of a broad range of *Bartonella* species, including *B. henselae*, *B. quintana*, *B. elizabethae*, and *B. vinsonii*
- ✓ Detects multiple species in one test, unlike IFA which detects one species at a time
- ✓ Uses specifically created recombinant proteins and not proteins from cell cultures
- ✓ Detects the full spectrum of disease: early, active, and late-stage disease
- ✓ Can be made genus and species-specific
- ✓ Quantity and location of the antigens are controlled by a printing-like process, improving consistency and specificity
- ✓ Avoids the old-fashioned, manual, error prone and time-consuming process of visualizing glass slides through a microscope
- ✓ Renders Western blot and IFA obsolete, and is meant to replace them



Actual patient Bartonella ImmunoBlots illustrating clean bands for easy results interpretation.



## Why ImmunoBlotting is Superior for Bartonella Testing?

ImmunoBlotting uses recombinant proteins instead of proteins from natural sources. The recombinant DNA technology provides a more efficient method to obtain large amounts of proteins (i.e. billions of copies). Additionally, by using recombinant technology, IGeneX scientists are able to create DNA sequences that would not naturally exist under normal circumstances and environmental conditions, leading to more sensitive and specific tests.



## All IGeneX ImmunoBlot Development and Testing is Done In House

### STEP 1



#### ISOLATE THE BARTONELLA GENES

Pure *Bartonella* genes are stored and ready to be cloned by IGeneX researchers.

### STEP 2



#### EXPRESS THE GENES

The *Bartonella* genes of interest are put into a host cell, such as *e.coli*, where they are expressed as a new protein. This is the so-called "recombinant protein."

### STEP 3



#### ISOLATE AND PURIFY DNA

After expression, the protein of interest is isolated and purified, and the non-proteinaceous materials are removed. The end result is a liquid stored in vials.

### STEP 4



#### SPRAY AND CUT IMMUNOBLOT STRIPS

The liquid containing the purified recombinant proteins is sprayed in precise amounts onto specific locations on a membrane strip.

### STEP 5



#### TEST IS PERFORMED

IGeneX clinical scientists mix a patient's sample with the ImmunoBlot strip to perform the test.

## How to Order Bartonella ImmunoBlots?

Bartonella ImmunoBlot tests can be ordered separately or as part of a panel. While the ImmunoBlot represents a significant improvement over standard serologies, not every case will be picked up by every test. This is why **IGeneX recommends panel testing**. A panel provides the best combination of direct testing (looks for pathogen) and indirect testing (measures antibody response).

## The IGeneX Advantage

### OUTPERFORMING OTHER LABS IN THE US AND WORLDWIDE

For over 30 years, IGeneX has been at the forefront of diagnostic testing for Bartonellosis and other tick-borne illnesses. IGeneX is certified by CLIA (Clinical Laboratory Improvements Amendments of 1988) to perform high-complexity tests on human samples in all 50 states. Including New York. This demonstrates that IGeneX meets the quality of standards at state and federal levels. Contact us today to get started.

CONTACT IGENEX TODAY TO LEARN MORE

556 Gibraltar Dr. Milpitas, CA 95035 | igenex.com | 1-800-832-3200

