



2022 TICK & LYME DISEASE SEASON EXPECTED TO BE RECORD SETTING

As more people venture out after being confined to their homes due to the COVID-19 pandemic, there is another danger lurking: ticks. We may have been stuck in isolation, but ticks have not. The blood-sucking creatures are ready to come out and play, and with the mild winter behind us and warmer days ahead, tick season is forecasted to see unprecedented levels in both populations and activity. As is Lyme disease, the most prevalent tick-borne disease with 470,000 cases per year. Everyone is urged to continue practicing social distancing when outdoors and to take additional precautions to avoid direct contact with ticks in fields, forests and yards across the country.

KNOW YOUR TICKS

These days, ticks are more than just an annoyance. One bite can make you sick, even change your life. Taking protective measures is important in order to prevent a tick bite. Reducing tick abundance in your yard, wearing protective clothing, and scanning your body for ticks are all great actions for preventing tick bites. Fortunately, the best way to prevent bites remains the same: Know your ticks and how to avoid them. Here are the most common ticks in the United States.

AMERICAN DOG TICK (*Dermacentor variabilis*)

DISEASES

Rickettsiosis, Tularemia

LOCATIONS

Eastern half of US,
California



EASTERN BLACKLEGGED TICK (*Ixodes scapularis*)

DISEASES

Lyme disease, Anaplasmosis,
Ehrlichiosis, Babesiosis,
TBRF, Powassan disease

LOCATIONS

Northeast, Southeast,
Upper Midwest



BROWN DOG TICK (*Rhipicephalus sanguineus*)

DISEASES

Rickettsiosis, Ehrlichiosis,
Babesiosis

LOCATIONS

Entire US



GULF COAST TICK (*Amblyomma maculatum*)

DISEASES

Rickettsiosis

LOCATIONS

South, Southeastern US



LONE STAR TICK (*Amblyomma americanum*)

DISEASES

Ehrlichiosis, Tularemia,
Heartland Virus, and STARI

LOCATIONS

Midwest, East,
Southeastern US



ROCKY MOUNTAIN WOOD TICK (*Dermacentor andersoni*)

DISEASES

Rickettsiosis, Colorado
Tick Fever, Tularemia

LOCATIONS

Rocky Mountain
states



WESTERN BLACKLEGGED TICK (*Ixodes pacificus*)

DISEASES

Lyme disease, Anaplasmosis,
Ehrlichiosis, Babesiosis,
TBRF, Powassan disease

LOCATIONS

West Coast
of US



SOFT TICKS (*Ornithodoros*)

DISEASES

Tick-Borne Relapsing
Fever (TBRF)

LOCATIONS

Western half of US



TEST A TICK

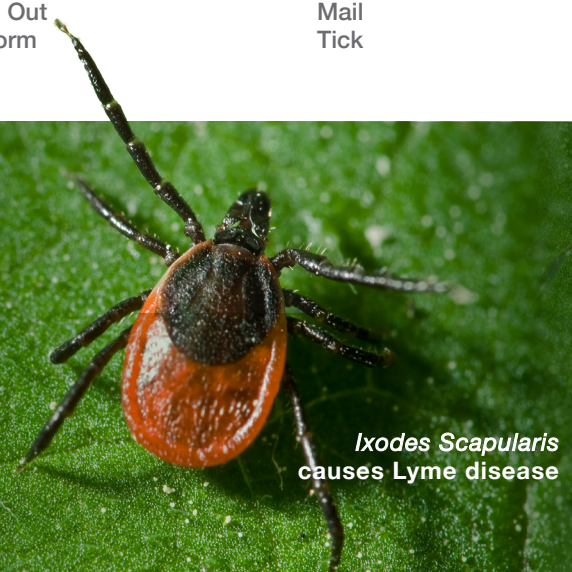
IGeneX can test ticks to determine if the tick is carrying the pathogens that can lead to tick-borne illnesses: *Borrelia burgdorferi* (Lyme disease), Tick-Borne Relapsing Fever (TBRF) (including *B. miyamotoi*), Babesiosis, Anaplasmosis, Ehrlichiosis, Bartonellosis, and Rickettsiosis. Some people prefer this approach to determine if they were exposed to a tick-borne illness. It's easy to get a tick tested. Simply remove the tick, save the tick (alive or dead), and mail the tick to us. Visit igenex.com to learn more.



HAVE YOUR BLOOD TESTED FOR LYME DISEASE

Lyme disease is one of the fastest-growing infectious diseases in the United States. IGeneX has developed several industry-leading tests that measure human antibody response to Lyme *Borreliae*, the causative agent of Lyme disease.

Our ImmunoBlot test has a sensitivity rate that is nearly double that of the standard two-tier testing protocol established by the CDC. When used in conjunction with clinical symptoms and patient history, IGeneX tests can better assist physicians in accurately diagnosing patients.



Ixodes Scapularis
causes Lyme disease

BROAD COVERAGE LYME AB ASSAY

NEW!

- Far broader and more inclusive of Lyme *Borreliae* species than standard serologies
- Better than two-tier ELISA/WB and two-tier ELISA
- Provides a simple, cost-effective, yes/no result with no complicated interpretation necessary

PRICE
\$195

TEST NUMBER: 601
CPT CODE: 0042U

WESTERN BLOT

- A relatively inexpensive method to detect Lyme *Borreliae*-specific antibodies and to monitor stage of disease
- Specific, which means that most of the time it will be positive only if a person has been truly infected
- Still the best western blot on the market, made with two strains of Bb

PRICE
\$250

TEST NUMBER: 188, 189
CPT CODE: 86617

IMMUNOBLOT

MOST POPULAR!

- Improved sensitivity because it includes Lyme *Borreliae*-specific antigens from multiple strains and species
- Improved specificity because pure proteins are sprayed at specific positions on the blot
- Superior at all stages of Lyme disease

PRICE
\$450

TEST NUMBER: 325, 335
CPT CODE: 86617